

# SPRING GARDENS

## APARTMENT

G.1.3



First floor



2 bedrooms



1 bathroom



106.8 m<sup>2</sup>



10.7 m<sup>2</sup>

## Situation



## Elevation



Street facade

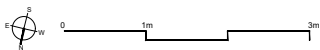
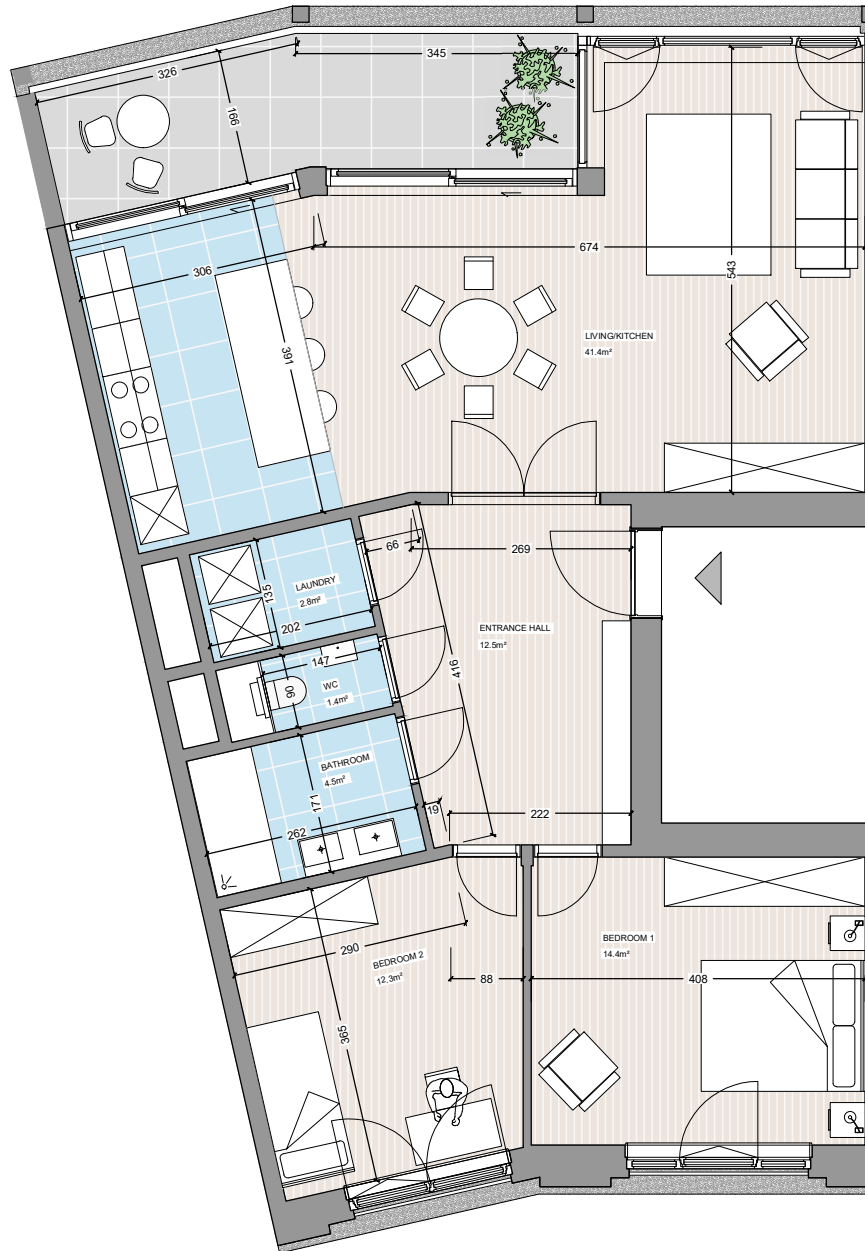


Rear facade

**MDW ARCHITECTURE**



Crown  
Estates



### Notes:

Measurements are given on a gross basis. Modifications may be made to this plan according to realization requirements and applicable standards. The description of the property, including wall thickness, composition, interior finishings, technical equipment, windows, etc., is detailed in the buyer's specifications document, which serves as the reference document for the buyer. Any window subdivisions and opening directions shown on this plan are for indicative purposes only. Furniture elements are depicted on the plan for illustration purposes and are not included in the sales price. Vegetation representation and flooring pattern are symbolic. Kitchen dimensions and layout provided are indicative; a kitchen designer's plan will be provided during the construction process.

Date 19/09/2023

APARTMENT G.1.3

ADDRESS Rue du Printemps 51, 1050 Ixelles